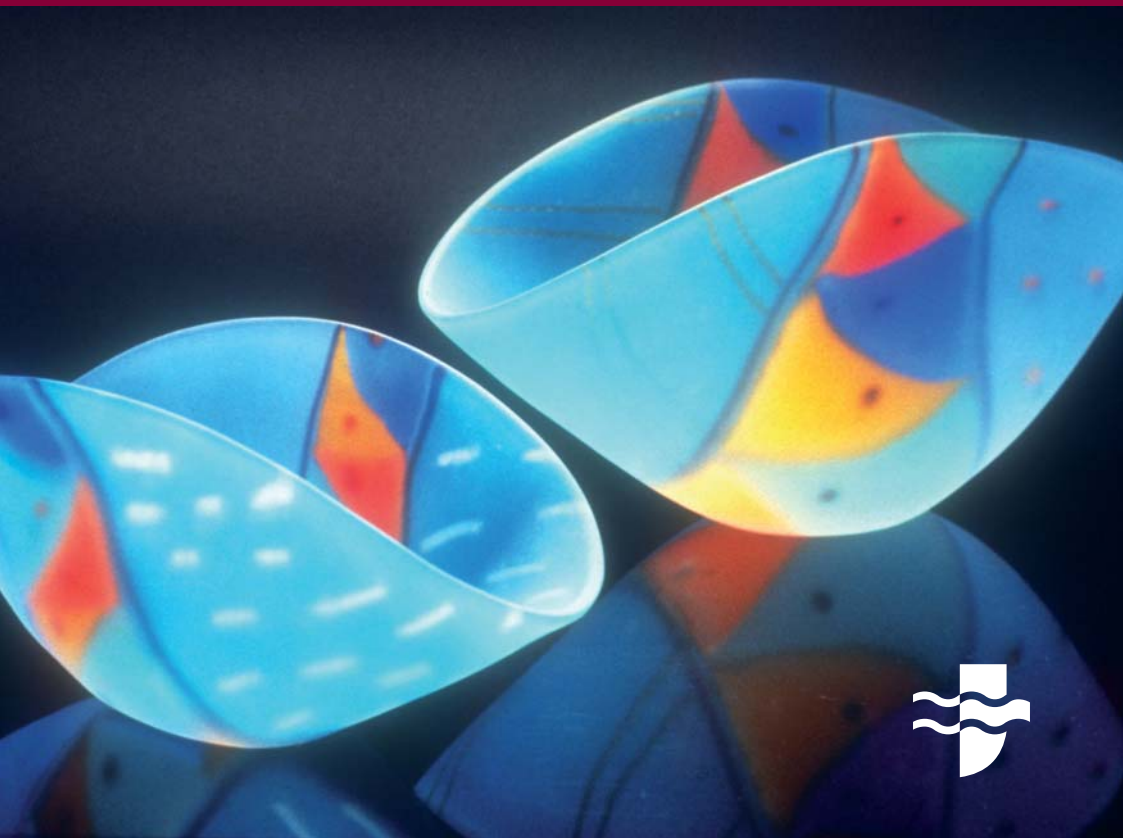


Postgraduate
PGCert/PGDip/MA [full-time and part-time]

Bath Spa University Investigating Crafts

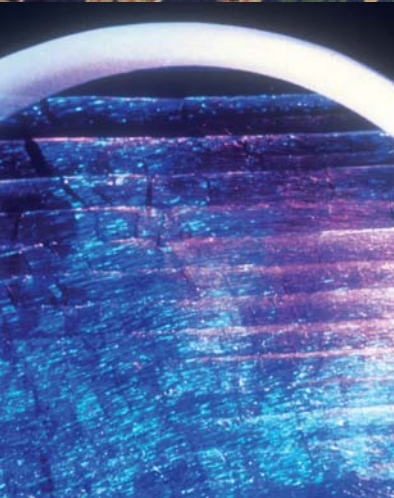




This unique course supports those wanting to write about, teach or curate Craft in both its contemporary and historical contexts.

The central aim of the course is to produce graduates who are adept at placing Craft activity (whether their own or others) into a strong context, and articulate in communicating its meanings and messages to a larger audience.

Snapshot



Awards

- Master of Arts (MA) Investigating Crafts.
- Postgraduate Diploma (PGDip) Investigating Crafts.
- Postgraduate Certificate (PGCert) Investigating Crafts.

Course length

- MA full-time three trimesters (one calendar year).
- MA part-time six trimesters.
- PG Dip full-time two trimesters (one academic year).
- PG Dip part-time four trimesters.
- PG Cert full-time one trimester.
- PG Cert part-time two trimesters.

Course location

Sion Hill and Corsham Court campuses.

Key features

- a unique course offering a new dimension to this aspect of the Creative Industries.
- opportunities to work with, and alongside Crafts practitioners.
- assessment tasks designed to support vocational needs.
- opportunities for study abroad via international partners.
- distance learning route available.

Applications

Application forms are available on the website and for any admissions enquiries please contact:
T: +44 (0)1225 875609
E: admissions@bathspa.ac.uk

Enquiries

For all enquiries about the course, please contact:
Dr Graham McLaren,
Course Director.
T: +44 (0)1225 875520
E: g.mclaren@bathspa.ac.uk

The Course

Course structure and content

The course is offered in both full and part-time modes. It is normally one year, (3 trimesters) in duration in full-time mode or 6 trimesters in part-time mode. The first two trimesters comprise taught sessions and assessed projects, while the Master's Project in the final part of the course is by negotiated project only. Completion of the first 2 modules on the course lead to the award of the Postgraduate Certificate, and completion of the first 4 modules leads to the award of the Postgraduate Diploma. Subsequent completion of the MA double module leads to the award of MA Investigating Crafts.

Teaching methods and resources

'...critical debate is vital to ensure the continued renewal of the sector... there are high numbers of the public interested in Craft [but] perceptions and media coverage tend to undervalue craft' Crafts Council Strategy & Plans, 2008.

This course delivers the history, theory and context of crafts activity in ways that help to contextualise current craft practice. The central premise of the course is that craft practitioners, together with those concerned with their work need a solid grounding in these areas as well as skills in writing, speaking, presentation and promotion in order to survive in a competitive commercial arena. The course content investigates Craft in its widest, modern

definition. Craft is now a politically loaded, globalised term that is as much discussed in relation to the 'new technologies' as it is in respect of single maker, hand production activity.

The course utilises the rich heritage of Crafts activity to be found in the South West of the United Kingdom to offer you the opportunity to study in a number of contexts. As well as lectures, seminars and tutorials at our Sion Hill campus you will be working at the University's Corsham Court research centre, where you will be part of a vibrant postgraduate research community. Study visits to practicing craftspeople are an important part of the syllabus, and you will use your new skills to work collaboratively and supportively alongside them. The course offers you the opportunity to study internationally via our partnership arrangements, and for those geographically distant from Bath there is a distance learning route available.

Modules

- **Research Methodologies**

Part one introduces generic research methodologies with part two considering subject specific material, analysis and evaluation techniques.

- **The Historical and Theoretical Context of Contemporary Craft**

This module provides you with the historical understanding needed to contextualise contemporary crafts. You will be introduced to key texts and to the history of ideas underpinning craft during the modern (post 1660) period.

- **Investigating Craft Practice**

Using the methodological tools and the historical understanding provided by earlier modules, this module encourages you, working collaboratively with others to examine, analyse and report upon contemporary craft practice in a discrete geographic area. You will be supported to publish this data as an article, book or website that is aimed at a 'popular' audience. The module will encourage you to be as adventurous as possible in your interpretation of this brief and in the range of the craft practice that you examine.

- **Consuming Contemporary Craft**

The consumption of craft is key to understanding its role in society. This aspect of craft has, however received far less attention than its practice (making). The module addresses issues including

the role of the museum sector; approaches to selling including galleries and fairs; the role of crafts in the home and the perception of craft activity in the media.

- **Master's Project**

You will build on the knowledge and skill you have acquired to propose, negotiate and pursue a self-directed project, supervised by your tutors through to completion. The Master's Project is capable of accommodating a variety of approaches. Examples include, but are not restricted to:

- A written dissertation
- A curated exhibition relating to contemporary or historical craft activity
- Production of digital materials relating to contemporary or historical craft activity including websites, DVD media etc.



Entry requirements

Admission is normally based on a good undergraduate degree in an appropriate discipline together with an interview. Applicants with a good honours degree in a related discipline and/or with relevant work experience will also be considered. Overseas applicants will be assessed on the basis of their qualifications and statement included in the application form. To help applicants – especially those from overseas – to decide if this course is appropriate for them, it is advisable to contact the Course Director prior to application.

Assessment methods

Assessment on the course is intended to not only support and test your learning, but to support you in a number of potential routes to future employment. Whilst on the course you may experience the following types of assessment:

- A written assignment;
- A collaborative project;
- An oral presentation;
- A written dissertation;
- A curated exhibition relating to contemporary or historical craft activity
- Production of digital materials relating to contemporary or historical craft activity including websites, DVD media etc.

Employability

Typical career destinations include:

- Crafts curator
- Journalist
- Crafts practitioner
- Gallery owner
- HE teacher
- Researcher
- Writer

Fees

The following fees are provisional for 2011/12 and may be subject to change. Fees are revised each year and the latest fee information can be found at www.bathspa.ac.uk/services/finance/students/

UK/EU students

£4,410 for the full-time MA or £735 per module plus £1,470 for the dissertation.

Overseas students

£9,690 for the full-time MA.

Channel Island and Isle of Man students

As UK/EU students plus a one-off registration fee of £625 paid at the start of the course.

Fees are paid in total at the beginning of each academic year, or in instalments by standing order throughout the duration of the course. Please note that students contract to pay the fees for their full course when they register, and fees are not normally refundable. Students failing to complete their course must continue to honour any instalment plan, even in the event of a subsequent withdrawal.



Notes

We advise you to obtain a copy of our postgraduate prospectus for full details of Bath Spa University and its programmes of study.

The contents of this leaflet are correct at the time of going to press. We will try to publicise any changes to it.

Please check the continued availability of the course and its modules before you apply by telephoning Student Services on +44 (0)1225 875875.

The operation of each course or module depends upon recruiting viable numbers. We may not be able to provide a course or module if insufficient numbers enrol. Our offer to you and your acceptance of a place here will be subject to this express condition.

Bath Spa University,
Newton St Loe, Bath,
BA2 9BN, UK

T +44(0)1225 875875

F +44(0)1225 875444

enquiries@bathspa.ac.uk

www.bathspa.ac.uk

