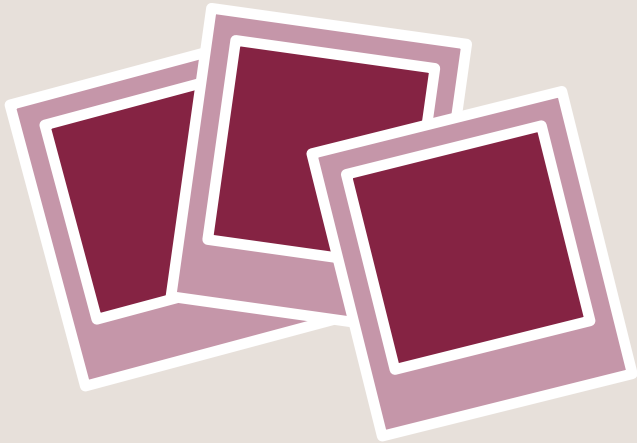


Bath Spa Selfie Trail

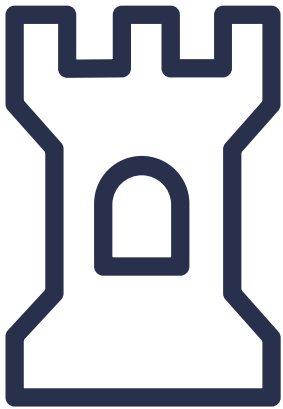
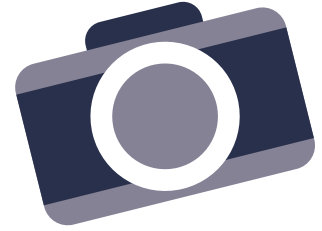


Get to know your surroundings with
your campus' own Bath Spa Selfie Trail.
Share your pictures on social using
#hellobathspa



Newton Park

Our Newton Park campus is a true one-off. It has everything you'd expect from a modern university, plus lots of things you wouldn't: a castle, a nature reserve, a lake and a herd of friendly cows. Just four miles from central Bath, it's a parkland campus with plenty of room to stretch yourself and think big.



MAIN HOUSE

The centrepiece of Newton Park, this grand Georgian building is one of the most recognisable landmarks at Bath Spa University, with study space open for both students and staff to use.



AMPHITHEATRE

A place where students can perform, sit, relax and take in the atmosphere of Newton Park.



THE GATEHOUSE

This ancient monument was built in the 14th century and is one of the oldest buildings on campus. You'll find it next to the Castle, which comes complete with its very own "dungeon".



TEMPLE ON THE LAKESIDE WALK

Located in the middle of the naturalistic lakeside walk, the Temple holds a grand view of the entire lake, which contains the nests to the resident ducks and swans, and the surrounding woods.

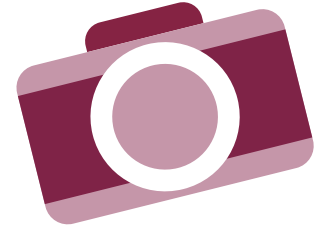


ITALIAN GARDENS

The Italian Gardens are great to wander around and relax in, complete with lush green lawns and a very impressive set of Edwardian gates.

Locksbrook Campus

Located next to the River Avon in Bath city centre, the open-plan building has technical workshops surrounded by open, flexible studio spaces, as well as large, open social areas. An amazingly inspirational place for you to flourish.



AL FRESCO

Enjoy a catch up overlooking the river from the open air seating area.



THE ART SHOP

Stocked with a wide range of specialist materials, go have a browse and see what's on offer.



CHELSEA ROAD

Locksbrook Campus is just a few minutes walk from Chelsea Road with its selection of cafés, deli, bakery and greengrocers. So much to see and eat!



TAKE A WALK

Locksbrook Campus opens straight onto the riverside. Perfect for a stroll into town or to just sit and watch the ducks.

Sion Hill

The Sion Hill campus is the main base for the Post Graduate Certificate in Education. Located in the historic Lansdown area of Bath, there are listed buildings, green, leafy spaces – all within walking distance of central Bath and the city's many landmarks.



THE CIRCUS

A short walk from the Crescent is the Circus. The Circus is a great place to soak in the city of Bath.



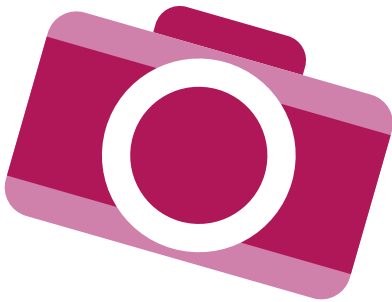
BATH ABBEY

At the centre of historic Bath, this medieval place of worship is filled with memorials and stained glass.



PULTENEY BRIDGE

Built in the 18th century, this scenic bridge is lined with shops and cafés.



ROYAL CRESCENT

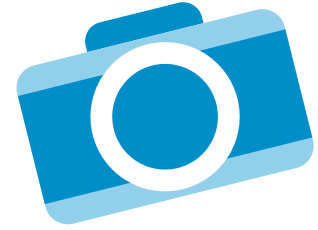
These Grade I listed Georgian terraced townhouses are arranged around a perfect lawn overlooking Royal Victoria Park.



ROYAL VICTORIA PARK

Explore these beautiful Victorian parklands with gardens to explore, opened by Queen Victoria in 1830.

Corsham Court

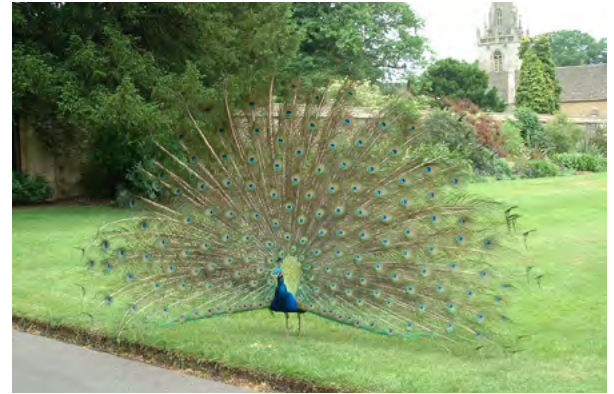


What could be more spectacular than Newton Park? Corsham Court may be a contender. Built in 1582, this is a specialist centre for the University's postgraduate teaching and research. Corsham town is also great to explore, and you may spot a peacock or two.



CORSHAM TOWN HALL

Housing the local council, this town hall is the centrepiece of the entire town of Corsham.



PEACOCKS

Catch up with the colourful residents of Corsham Court, who you will see promenading around the grounds.



ST. BARTHOLOMEW'S CHURCH

Open to the public everyday, this lovely church began all the way back in Saxon times and is one of the oldest buildings in Corsham today.



EXPLORING THE TOWN

Whether it's grabbing a bite to eat, admiring the Flemish cottages or simply having a wander, Corsham is a great place to explore and relax.