



# Your guide to student finance

Undergraduate 2024/25



BATH SPA  
UNIVERSITY

## **A lifetime of benefits**

If you're thinking about applying to university and are wondering how you'll afford it, use this guide to help you understand the financial support available.

The student loan system is there to support your journey through University. All UK students are able to apply for a tuition fee loan and a maintenance loan to help with living costs. You will start to repay these loans when you start earning above a certain amount.

## **What do I have to pay for?**

As a student there are two main costs you will have while studying:

1. Tuition fees
2. Living costs, such as housing, food etc.

## **Tuition fees**

The tuition fee for UK students starting a new full-time degree will be £9,250 in 2024/25.

If you're embarking on a year abroad, the reduced fee is currently £1,385\* and for a year in industry, it's £1,850\*.

The Accelerated degree tuition fee is £11,100 for 2024/25 (for example, our two year BA Accelerated Education degree). Student Finance England students may apply for a Tuition Fee Loan for this amount if on an accelerated course but please note the maximum loan for Student Finance Wales is £9,250.

## **Living costs**

See the living costs section later in the document.

\*Please note, this may be subject to changes in government policy.

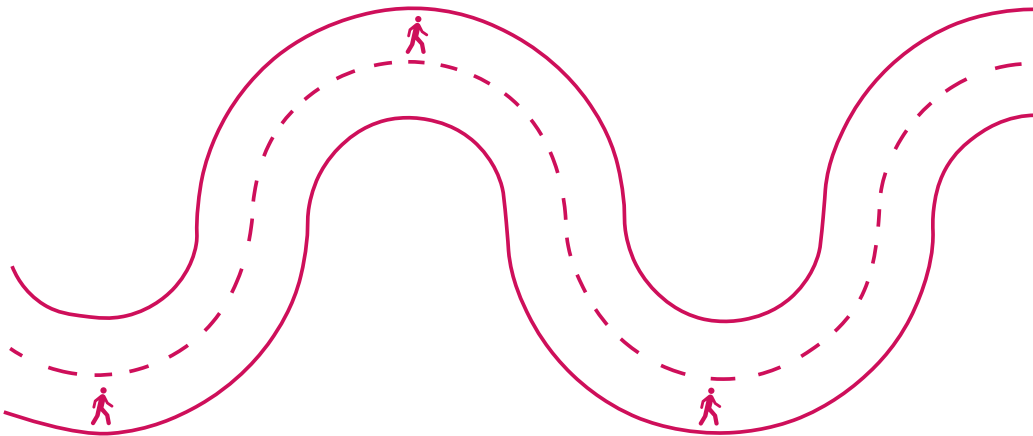
# Student funding calendar

---

## February/March onwards

Applications to Student Finance in England opens, where you can apply for Tuition Fee Loans and Maintenance Loans.

**Apply online** early to ensure your loans are in place for when your course commences – you don't need a confirmed place to apply.



## October - January

### UCAS Undergraduate application

All applications to UK Universities for full time undergraduate courses are made online through UCAS (Universities Clearing Admissions Service).

The [UCAS website](#) has details of the dates you should submit your applications, receive your offers and make your choices.

## March/April

Applications for student finance in England, Wales, Scotland and Northern Ireland usually open around this time of year.

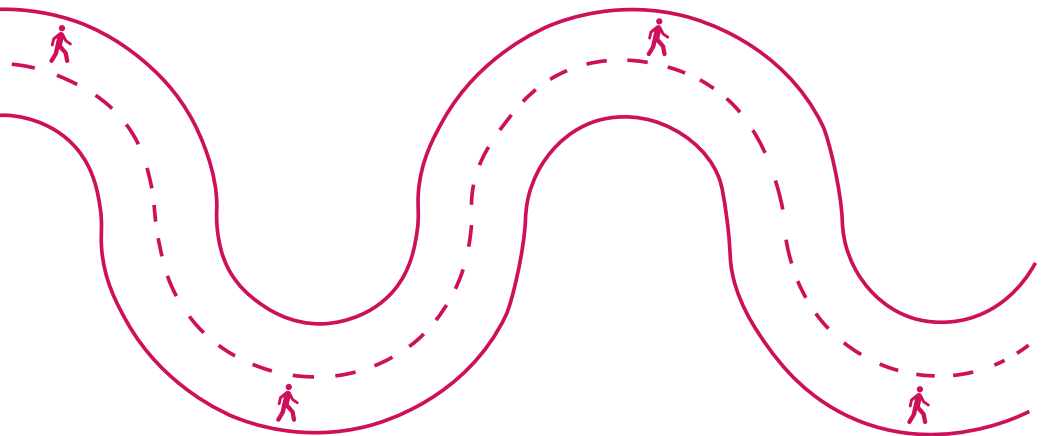
## April/May/June

The deadline for applying for funding through Student Finance for courses that start in September range from April to June, depending on where you live (more details available on the Student Finance website).

You can still apply for funding (up to nine months from when your course starts) but you won't get it in time for the start of your course!

## September

The first instalment of the maintenance loan received (provided you have your Financial Notification and Payment Schedule from Student Finance).



## August

Results! Remember to update Student Finance online if there are any changes to your University and/or course.

## November

The first instalment of a bursary or scholarship (dates may vary).

## The following year...

January: Second instalment of the maintenance loan (start of the second term).

February: Second instalment of a bursary or scholarship.

April: Third instalment of the maintenance loan (start of the third term).

May: Third instalment of a bursary or scholarship.

# Government loans

## Tuition fee loan

You can apply to Student Finance via their [website](#).

If you're studying an undergraduate diploma and are aged 19 or over then you may be eligible for an [Advanced Learner Loan](#).

UK students (starting in 2024/25) can apply for a loan to cover all tuition fees for a degree:

- You won't have to pay for any of your tuition in advance
- The tuition fee loan is paid direct to Bath Spa University
- The tuition fee loan is not means tested on household income.

## Maintenance loan

You can apply for a loan to help with your living costs and other expenses.

The amount of the loan will depend on your household income and other circumstances; use the [Student Finance calculator](#) to find out more.

The maintenance loan will be paid direct into your bank account each term.

If your course lasts longer than 30 weeks and three days in an academic year (for example, the Accelerated degree) you might be able to get a Long Courses Loan to help towards living costs. The Long Courses Loan is part of the Maintenance Loan and to be eligible, you must be able to get the part of the Maintenance Loan that depends on your household income.

Student Finance will assess whether you can get the Long Courses Loan when you apply for your main student finance.

This table shows the 2024/25 loan amounts for Student Finance England if you're studying outside of London, not living in your parental home and not in the final year. Living in the parental home and final year loan amounts are less and students from Wales, Northern Ireland and Scotland have different loan amounts.

Household income	Loan for living costs
£25,000 and below	£10,227
£30,000	£9,497
£35,000	£8,766
£40,000	£8,035
£42,875	£7,614
£45,000	£7,304
£50,000	£6,573
£55,000	£5,842
£60,000	£5,111
£62,347 and above	£4,767 (minimum loan)

The maximum loan for living costs for 2024/25 will be £10,227 for students who are not eligible for benefits. For students eligible for benefits and living away from home the maximum will be £11,658.

The maximum loans for living costs in 2024/25 for new full-time students and continuing full-time students starting their courses on or after 1 August 2016 who are aged 60 or over on the first day of the first academic year of their course will be £4,327.

You will need to be prepared to meet any shortfall between living costs and your maintenance loan.

Use the link below to apply to Student Finance from February/March but ideally no later than May.



### **Students with dependents**

If you have dependants, you may be eligible for extra non-repayable support. To find out if you are, please contact Student Finance.

The maximum adult dependants' grant will be increased to £3,438 for 2024/25.

The maximum childcare grant payable in 2024/25, which covers 85% of actual childcare costs up to a specified limit, will be increased to £193.62 per week for one child only and £331.95 per week for two or more children.

The maximum parents' learning allowance payable in 2024/25 will be increased to £1,963.

### **Students with disabilities**

Disabled Students' Allowances (DSAs) are extra help from Student Finance for eligible students who have a disability, a mental health or medical condition, Asperger Syndrome or a specific learning difficulty like dyslexia or dyspraxia. They are non-means tested allowances for eligible UK students, which pay for extra costs incurred as a result of a disability.

## Part-time

If you're a part-time student studying at least 25% of a full-time course, you'll be eligible for a tuition fee loan, payable on a pro-rata basis. For part-time students there's also a maintenance loan (prorata based on a maximum loan for living costs for 2024/25 of £10,227).

Please note your funding arrangements may be different if you've previously studied (but not completed) a degree. A UK student who already has a higher education qualification may not be entitled to funding for a second degree; please contact us for more information about your funding entitlement if this is the case.

## Repaying your loans

- You'll only start repaying the loan once you've graduated and are earning over £25,000 (2024/25).
- The interest rate is variable and based on the RPI (retail price index) and only charged on the amount of loan that has been released.
- Loans are written off after 40 years and it is expected most students will not repay all of the amount they've borrowed.
- Only 9% of your income above £25,000 (2024/25) is taken for repayments.

This table shows some examples of repayments:

Your annual income (before tax)	How much you repay (per month)
£25,000 and below	£0
£26,000	£7
£35,000	£75
£40,000	£112

Your student loan will not go on credit files, which is the list of money you've borrowed.

For more information on repayments and interest rates, please visit the [Student Loan Repayment](#) website.

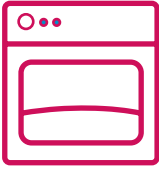






## Living costs

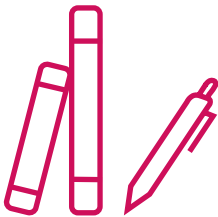
---



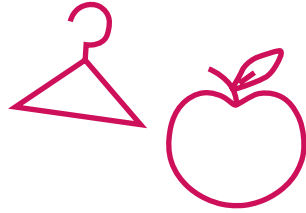
If you're living away from home, the biggest expense will be accommodation costs. Please see our web site for prices [www.bathspa.ac.uk/student-life/accommodation/our-accommodation/rents/](http://www.bathspa.ac.uk/student-life/accommodation/our-accommodation/rents/)

Accommodation is usually paid at the start of each of the three terms (which corresponds to your student maintenance loan payments) by bank standing order.

We ask for £250.00 pre payment of licence fee within 14 days of signing the licence. This amount is part of the total rent and not extra.



You'll also need to consider course-specific costs like books, stationery and printing. For some courses, you may need to pay for field trips, art materials and specialist equipment. Some courses have to pay a Study Visit contribution fee subsidised by the University.



After accommodation, the next largest cost is your day-to-day living expenses such as groceries and going out. Though the amount varies based on the individual, a single student living away from home during term time will usually need at least £481 a month (source: NASMA (National Association of Student Money Advisors 2024). Of course, if you live at home while studying, your costs will be lower. You'll also need to consider mobile phone bills, TV Licence fees and (if not included in private rented accommodation) gas, electricity and water bills.



You won't be able to plan for all expenses, so try to allow for unexpected costs, such as an extra journey home, or a broken laptop/mobile phone. Consider budgeting for occasional expenses such as birthday cards/presents, Christmas and holidays.

## Other expenses

Students are not automatically entitled to claim for full healthcare costs (prescriptions, dental treatments, eye tests and glasses) but you can complete a HC1 form to see if you are entitled to help based on low income. A prescription in England currently costs £9.90 per item but if you need regular prescriptions, it may be cheaper to buy a pre-payment certificate (available online for three or 12 months). Eye tests cost between £25-£40 and a basic NHS dental checkup costs £25.80.

Students bringing their own television or if watching BBC programmes on iPlayer or any live TV through apps, will need to purchase a TV Licence. The cost of a TV Licence is £169.50 per year.

You may find that your parents' household insurance already covers some items but you should consider arranging cover before leaving home, to start from the date you move in. You can use a price comparison website to find the cheapest cover.

Full time students don't have to pay Council Tax and you can opt to share your details with Bath and North East Somerset Council (B&NES) when completing your online registration. If you opted not to share but need to confirm your student registration to B&NES or live outside B&NES and need a Council Tax letter, you can contact the Student Information Team via MyServices [Student Information and Support](#).

## Other ways of saving money

Students are often entitled to discounts, for example on local bus travel. If you'll be using the train to visit home, the Young Persons Railcard will give you savings on some fares. Student discount sites like Student Beans, My Uni Days, Save the Student and Student Money Saver promote deals and discounts. Finally, TOTUM will give you over 200 discounts in the UK. More information is available online.

### Need a part time job?

If you need a part-time job to support yourself financially, contact our JobShop.

[jobs@bathspa.ac.uk](mailto:jobs@bathspa.ac.uk)

### TOP TIP

Use a budgeting tool:  
[www.moneyhelper.org.uk](http://www.moneyhelper.org.uk)

# Funding

---

## **Bath Spa University Funding**

Bath Spa University offers a range of possible [scholarships, bursaries and other opportunities](#) to help you fund your studies.

## **Bath Spa University Bursaries**

Bath Spa University is providing awards in 2024/25 worth up to £4,000 split over three years to eligible new first year students. These are targeted awards for first time, first degree students from areas of low participation in higher education based on POLAR4 (Quintile 1 & 2) and assessed by Student Finance with income below £42,875.

There is additional support up to £750 split over three years (making a total award of £4,750) for priority groups:

- Declared care leavers
- Foyer students (current or moved out within the last 12 months)
- In receipt of the increased loan for living costs

You'll need to be UK domiciled and apply to Student Finance (England, Wales, Northern Ireland or Student Award Agency for Scotland) to give consent for your household income figure to be shared with Bath Spa University.

## **Accommodation bursaries**

For the 2024/25 academic year, we are helping students in our accommodation with financial support in the form of a £500 bursary.

£500 will be awarded to eligible students and is provided for accommodation use to help pay towards rental payments and other housing-related expenses.

Students qualify for this one-off bursary if their household income is equal to or less than £20,000 as a threshold.

## **Care Leavers, estranged students, young adult carers and Foyer students**

If you identify in any of these groups, please contact Student Wellbeing Services. They can speak to you about your eligibility for additional bursaries, accommodation and Student Finance.

## **Unite Foundation Scholarships**

The Unite Foundation provides scholarships of free student accommodation to young people in the UK from care or estranged backgrounds. You might be able to receive three years of free accommodation in Unite halls of residence.

### **Art and Design with Integrated Foundation Year Scholarship**

After you progress to undergraduate level, you'll be awarded a progression scholarship at each level of study, for years one, two and three of your BA course. The scholarship is received as a tuition fee waiver. The scholarships you'll be awarded are detailed below, and apply to home and international students:

Year 1	£1,250
Year 2	£1,000
Year 3	£1,000

### **Postgraduate Scholarship for Bath Spa University Alumni**

The scholarship is available to any Bath Spa graduate (undergraduate or PGCE) progressing onto a Taught Master's Degree (e.g. MA, MSc, MRes).

The scholarship is received as a tuition fee waiver and the amount is £2,000 for full time students starting in 2024/25 (or pro rata if based on number of credits).

### **Short-term loans**

The short-term loan scheme has been established to help students with a temporary cash flow problem caused by circumstances beyond their control (e.g. delayed student loan or wages). Generally the standard Short Term Loan is £100 in any given week for a single person with no dependents.

You can apply for a short-term loan by completing the [online application form](#).

### **University Access Fund (UAF)**

Bath Spa University provides a range of Access Funds for undergraduate, postgraduate, UK, EU and International students. Access Funds are to assist students who may be experiencing unexpected financial hardship or in an emergency situation.

More information about the application process is available online the [Student Funding](#) webpages:

## Scholarships

We have a variety of **awards** that are available to current undergraduate students.

This funding is available to eligible students to apply for after registration. Some examples of funding we offer are below. The 2024/25 funding opportunities have yet to be finalised.

The **High Performance Sports Scholarship** has been created to support students who are studying at the University whilst competing on a national and international stage. The University actively encourages extra-curricular activities and is proud to support excellence in sport.

**Multiple awards up to £1,000**

The **Extra-curricular Activity Fund** provides financial support for individual or groups of students who are undertaking an extra-curricular activity which is not related to their academic programme. Any student who is an ambassador for the University representing at county, national or international level through a sporting or extra-curricular activity is eligible to apply.

**Multiple awards up to £300**

The **International Travel Fund** assists students wishing to embark on international travel placements and study trips.

**Multiple awards up to £500 per student**

The **Outward Mobility Award** has been established to assist students wishing to embark on international placements, research or study trips that are related to their undergraduate degree course. This is a targeted award and Bath Spa University is particularly keen to encourage students who might be put off by the costs.

**Multiple awards up to £3,500 per student**

The **Gane Trust** provides an annual travel award for a student studying at Bath Spa University on an Art or Design subject. The purpose is to encourage and support a student to travel abroad to study an aspect of design or craftsmanship.

**Two awards of £1,000**

The **Bath Spa Placements Award** is a targeted award to support students who wish to improve their employability. The funds available from the award could be used towards accommodation, travel, workwear or sustenance in association with an arranged, unpaid/low paid placement. Alternatively, this could also be used by students to attend networking events, insight days and conferences.

**Multiple awards up to £300 per student per academic year**

## Trusts and Charities

Some trusts and charities offer select students limited financial support.

To see if you're eligible contact Student Wellbeing.

## **Student Wellbeing**

Bath Spa University's **[Student Wellbeing Services](#)** can provide professional advice and guidance to applicants and students on:

- Money
- The University's Medical Service
- Mental health and wellbeing
- Accessibility and disability
- Young adult carers
- Estranged students
- Care leavers

## **Managing your finances**

### **Student Wellbeing**

**[studentwellbeing@bathspa.ac.uk](mailto:studentwellbeing@bathspa.ac.uk)**  
**01225 876543**

### **Student Funding**

**[studentawards@bathspa.ac.uk](mailto:studentawards@bathspa.ac.uk)**  
**01225 875319**

### **Student Fees**

**[fees@bathspa.ac.uk](mailto:fees@bathspa.ac.uk)**  
**01225 875870**

For the most up-to-date facts and figures, please check our website: **[www.bathspa.ac.uk](http://www.bathspa.ac.uk)**

